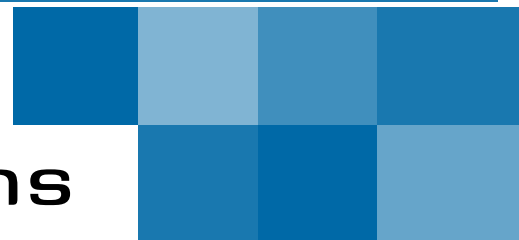


**SIEGWARE**

Architectural Innovations



# Consumables Catalogue 2020

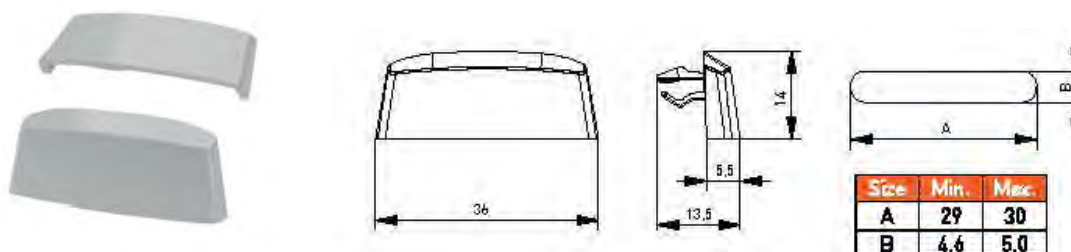
# Consumables

▪ Accessories	1
▪ Adhesives & Sealants	6
▪ Cleaners & Lubricants	15
▪ Fasteners & Fixings	19
▪ Gaskets	22
▪ Glazing	24
▪ Installation	27
▪ Tools	36

## Softline 36 Drainage Caps

### Product information

Drainage caps for uPVC window and door systems.



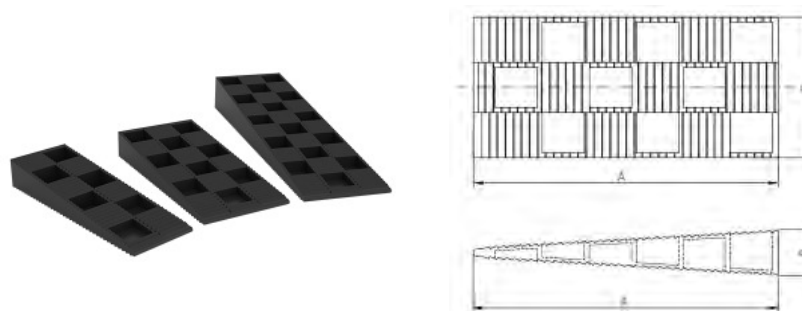
Product code	Description	Colour	Packaging unit
31390160100	Drainage caps	9016 white	1000
31380190100	Drainage caps	8019	1000
31380030100	Drainage caps	8003	1000
31370160100	Drainage caps	7016 anthracite grey	1000
31390050100	Drainage caps	9005 black	1000
31370010100	Drainage caps	7001	100
31380770100	Drainage caps	8077 brown	100
31390010100	Drainage caps	9001 cream	100

Note: Softline 46mm available on request.

## Fixing Wedges

### Product information

Plastic wedges for adjustment and installation of windows and doors.



Product code	Description	Material	Packaging unit
72714290000	Fixing wedge - small	plastic	500
72720450000	Fixing wedge - large	plastic	200

## KONIG Touch-up Pens

### Product information

Coloured touch-up pens for uPVC window profiles. (Top coat pen for colouring miter grooves on foil-laminated uPVC window profiles and doors. Recommended for indoor and outdoor use. Acrylic topcoat applies easily and touch dry in 5-10 mins, with 24 hrs curing.)



Product code	Description	Colour	Packaging unit
243546005018-164	Coloured touch up pen	turner oak	1
243556005118-164	Coloured touch up pen	sheffield oak	1
243546017117	Coloured touch up pen	jet black	1
243546070509	Coloured touch up pen	black/brown	1
243546070709	Coloured touch up pen	anthracite plus	1
243546075412-234	Coloured touch up pen	9016 white	1
243546093494-234	Coloured touch up pen	anthracite grey	1
243546111707-234	Coloured touch up pen	signal grey	1
243546147907-164	Coloured touch up pen	ceylon	1
243546157110-234	Coloured touch up pen	walnut	1
243546177210-234	Coloured touch up pen	dark oak	1
243546182710-234	Coloured touch up pen	golden oak	1

## KONIG Hard Wax Repair Kit

### Product information

Repair kit for uPVC windows and laminate floors.



### Contents

- x10 Hardwax PLUS, 8cm, Series Renolit Woodgrain
- x10 Hardwax PLUS, 8cm, Series Renolit Unidekore
- x1 Filler Planer, yellow
- x1 Brush-Fix Clearcoat, silk gloss
- x1 Brush-Fix Clearcoat, semi-gloss
- x1 melting device
- x1 Nonwoven abrasive coarse, approx. 10 x 6 cm
- x1 sanding fleece, fine, 55 x 75 mm

Product code	Description	Packaging unit
0306690	uPVC repair kit	1

## blaugelb U Packers

### Product information

Spacer mounting clips used for leveling, exact alignment, and lining in window and door construction as well as in the interior and plastering of ceilings, walls, and floor structures.

### Product advantages

- fast compensation with millimeter precision, quick assembly
- universal use, for leveling, straightening and underlaying
- anti-slip protection with fixing hook
- non-positive direct load suspension
- made of high-quality polypropylene, high resistance to other chemical products



Product code	Description	Size (mm)	Width (mm)	Packaging unit
0416220	U packer	40 x 30	1	500
0416223	U packer	40 x 30	3	500
0416225	U packer	40 x 30	5	500
0416227	U packer	40 x 30	8	500
0416229	U packer	60 x 45	1	500
0416231	U packer	60 x 45	3	500
0416234	U packer	60 x 45	5	500
0416238	U packer	60 x 45	8	250

Transporter Blocks

Product information

Extruded polystyrene rigid foam that has high compressive strength, and reliably absorbs pressure loads. Protect sensitive surfaces and fragile goods against damage during transport.



Product code	Description	Size (mm)	Packaging unit
0414504	Transporter blocks	48 x 48 x 10	100
0414524	Transporter blocks	48 x 48 x 15	100
0414525	Transporter blocks	48 x 48 x 20	100
0414526	Transporter blocks	48 x 48 x 30	100
0414529	Transporter blocks	48 x 48 x 50	100

## Cosmofen Service Kit

### Product information

Convenient kits for cleaning, care, protection and servicing of window and door profiles, and seals and mechanisms.



### Cleaning & Care SERVICE SETS for windows and doors

#### KIT CONTAINS:

##### Cleansing Milk

Abrasive, solvent-free intensive cleanser for anodized aluminium windows, doors and roller shutters as well as for polyurethane windows and for all white PVC windows and roller shutters.

##### Gasket Care

For maintenance and servicing of the gaskets. Sustains the softness and prevents gaskets sticking on the profile in summer and freezing on the profile in winter.

##### Fitting Oil

For maintenance and servicing of the fittings and hinges. Sustains the required gliding properties of the moving parts, thus prevents the metals from grinding dry in combination with corroding/digging in. Also provides additional rust protection.

##### Cleaning Cloth

One cleaning cloth is included in the kit.



Maintenance of the fittings



Cleaning of surfaces



Maintenance of the gaskets

### Product Code - W496010 (white) / W498004 (colour) - Technical Data

BASIS	2-component polymerisation resin on acrylic basis	
COLOUR	of hardened up film	white approx. RAL9016
FILM PROPERTY	of hardened up film	(similar to PVC-hard) hard impact resistance
MIXING RATIO	powder : paste in parts by weight	= 13:6g
VISCOSITY	at +20°C, immediately after the mixing	thixotrope
APPLICATION TIME	of the mini-set at +20°C (the application time is half as short at +30°C and twice as high at +10°C)	approx. 5 min
GRINDING RESISTANCE	at +20°C	after approx. 25 min
FINAL SETTING TIME	at +20°C, 50% rel. air humidity at ~90% Until functional hardness has been reached	approx. 120 min approx. 1d
MINIMUM TEMPERATURE FOR APPLICATION		from +5°C

## Ramsauer Sealing Adhesive 640

### Product information

640 Dicht Kleber sealing adhesive is suitable for gluing static and vibrating structures and components in car-body construction, container manufacturing and in boats, as well as for air conditioning systems and floor joints. 640 Dicht Kleber is a quickly curing neutral heavy-duty adhesive with high initial adhesive force. Highly weather resistant, does not contain any silicone, isocyanates or solvents, adheres to moist substrates, particularly suitable for gluing mirrors, suitable for application in clean rooms. Tested to provide burglar-resistant joints of resistance class ("WK") 2. Tested to EMICODE EC 1 - R very low emission. Fulfills the requirements of LEED and DGNB.



Product code	Description	Colour	Size (ml)	Packaging unit
4250302	Sealing adhesive 640	white	310	12

## Ramsauer Kraft Fix Power Adhesive 655

### Product information

655 Kraft Fix is a silicone and isocyanate-free power adhesive with a shore-A hardness of approx. 80. 655 Kraft Fix cures virtually without shrinking and without any odour. Thanks to its excellent adhesion to a wide variety of substrates it can be used for a vast field of applications. The product is suitable for window manufacturing, for securing the glass panes in timber and uPVC frames. Suitable for gluing mirrors. Fulfills the requirements of LEED and DGNB.



Product code	Description	Colour	Packaging unit
4290202	Kraft fix power adhesive 655	white	20
4290206	Kraft fix power adhesive 655	grey	20



## Soudal FIX ALL Crystal

### Product information

Fix ALL® Crystal: The perfect product if you are in search of a sealant-glue with same strong properties as the Fix ALL® Classic and is also 100% transparent and paintable.



Product code	Description	Colour	Size (ml)	Packaging unit
122630	Polymer adhesive sealant	clear/transparent	290	12

## Ramsauer Marine Adhesive 540

### Product information

540 SEAL ADHESIVE is characterised by outstanding durability, vibration resistance, and elasticity over a wide temperature range. 540 SEAL ADHESIVE has excellent adhesion to moist substrates. Thanks to quick curing and high initial adhesive force, 540 SEAL ADHESIVE is suitable for preparing weather-resistant glue joints capable of bearing dynamic loads, in particular in the construction of boats, ships, yachts, and containers. Suitable for a wide variety of substrates, such as timber, metal, glass-reinforced plastic, a wide range of plastics, as well as mirrors.



Product code	Description	Colour	Size (ml)	Packaging unit
4253402	Marine Adhesive 540	white	310	20

## Ramsauer Pur Seal 522

### Product information

Ready to use polyurethane sealant used to create resilient and vibration resistant joints, suitable for indoor and outdoor use. Multi-purpose, providing good adhesion to timber, anodised aluminium, paint-coated metal, polyester, concrete etc, even without a previous primer coating.



Product code	Description	Colour	Size (ml)	Packaging unit
3230603	Pur seal marine 522	black	600	20

## Ramsauer PU Marine Bond 550

### Product information

Ready to use polyurethane adhesive and sealant with excellent adhesive properties and high mechanical strength. The joint sealing compound is tolerance compensating, vibration-reducing, resilient and non-corrosive, and suitable for dynamically loaded bonded and sealed joints. Multi-purpose, providing good adhesion to timber, paint-coated metal, polyester, concrete etc, even without a previous primer coating.



Product code	Description	Colour	Size (ml)	Packaging unit
4070603	Pur bond marine 550	black	600	20

## Ramsauer Adhesive 620

### Product information

620 Konstruktions Kleber Rapid construction adhesive is very fast, silicone-free and cures with air humidity or residual moisture (e.g. in timber) to form a highly resistant joint. Suitable for timber, metals, fire-resistant building slabs, containers, ventilation and air conditioning systems, etc. The adhesive can be covered with paint coats, can be ground, and it is waterproof.



Product code	Description	Colour	Size (ml)	Packaging unit
4050300	Construction adhesive 620	off white	310	20

## Corfix Duo Adhesive

### Product information

A two-component, polyurethane solvent-free adhesive designed for structural bonding of aluminum frame and sash corners. Can be used for pressure bonding of all kinds of insulating materials, gypsum board, FGK plates with steel, concrete.



Product code	Description	Colour	Size (gr)	Packaging unit
50411119000N	Adhesive	beige	900	10
50411119000SZ	Adhesive	grey	900	10

## Ramsauer 120 Silicone

### Product information

120 Neutral is particularly suitable for sealing insulating glass in timber frames with water dilutable paint systems, as well as for sealing connection joints. Adheres well without primer, compatible with paint coats, abrasion-free. Tested to DIN 18545, Part 2, Group E and EN ISO 11600, Class G25LM. In accordance with DIN 18540, Part 1. Fulfills the requirements of LEED and DGNB.



Product code	Description	Colour	Size (ml)	Packaging unit
1100301	Neutral crosslinking silicone	transparent	310	20
1100302	Neutral crosslinking silicone	white	310	20
1100303	Neutral crosslinking silicone	black	310	20
1100304	Neutral crosslinking silicone	dark brown	310	20
1100305	Neutral crosslinking silicone	bronze	310	20
1100306	Neutral crosslinking silicone	grey	310	20
1100308	Neutral crosslinking silicone	oak	310	20
1100390	Neutral crosslinking silicone	clay brown	310	20

## Ramsauer Natural Stone 440 Silicone

### Product information

NATURAL STONE 440 is a sealant specifically developed for jointing natural stone such as marble, granite, terrazzo, etc. An important advantage of this product over conventional silicone sealants is that contact with the mentioned building materials does not cause contamination of edge zones. NATURAL STONE 440 contains fungicidal and bactericidal agents and is also resistant to commercially available cleaners and disinfectants. NATURAL STONE 440 is suitable for use in joints exposed to high stress as well as for application in underwater structures. Tested to DIN EN ISO 846. Tested to ISO 16938-1 (test to determine staining of edge zones of natural stone by sealants used in joints). Suitable for use in food areas.



Product code	Description	Colour	Size (ml)	Packaging unit
1900301	Neutral crosslinking silicone	transparent	310	20
1900302	Neutral crosslinking silicone	white	310	20
1900303	Neutral crosslinking silicone	black	310	20
1900310	Neutral crosslinking silicone	bahama beige	310	20
1900319	Neutral crosslinking silicone	manhattan	310	20
1900321	Neutral crosslinking silicone	anthracite	310	20
1900325	Neutral crosslinking silicone	joint grey	310	20
1900328	Neutral crosslinking silicone	concrete grey	310	20
1900345	Neutral crosslinking silicone	pergamon	310	20

## Ramsauer 450 Silicone

### Product information

SANITARY 450 exhibits excellent adhesion to all materials that are commonly used in sanitary areas and facilities. This product contains fungicidal and bactericidal agents to prevent infestation by micro-organisms (mould fungi, bacteria). Great ease of application. SANITARY 450 is resistant to commercially available cleaning agents and disinfectants. More colours available on request. Tested to DIN EN ISO 846.



Product code	Description	Colour	Size (ml)	Packaging unit
2000301	Acidic crosslinking silicone	transparent	310	20
2000302	Acidic crosslinking silicone	white	310	20
2000310	Acidic crosslinking silicone	bahama beige	310	20
2000319	Acidic crosslinking silicone	joint grey	310	20
2000325	Acidic crosslinking silicone	manhattan	310	20
2000345	Acidic crosslinking silicone	pergamon	310	20
2001321	Acidic crosslinking silicone	anthracite	310	20
2002303	Acidic crosslinking silicone	black	310	20

Ramsauer Primer 100

**Product information**  
For silicone and hybrid sealing compounds on plastics.



Product code	Description	Size (ml)	Packaging unit
9600310	Primer 100	300	1

Ramsauer Primer 180

**Product information**  
Special primer for gluing natural stone using 655 Kraft Fix adhesive.



Product code	Description	Size (ml)	Packaging unit
9600118	Primer 180	300	1

## blaugelb uPVC Adhesive

### Product information

Used for uPVC profiles, suitable for ABS and ASA, moisture and temperature resistant, weather and UV resistant.



Product code	Description	Colour	Size (gr)	Packaging unit
9017100	uPVC glue	transparent	180	1
9017101	uPVC glue	white	180	1

## blaugelb CA 5 Instant Adhesive

### Product information

Suitable for PMMA and acrylic surfaces including APTK, EPDM, solid and cellular rubber, and synthetic elastomers. Fast curing, weather and UV resistant. Do not use on porous or absorbant surfaces.



Product code	Description	Type	Size (gr)	Packaging unit
0008435	CA5 instant adhesive	low viscosity	20	1
0008436	CA5 VL instant adhesive	medium viscosity	20	1



## blaugelb uPVC Cleaner S5

**Product information**  
Dissolving cleaner for deep scratches and marks on white uPVC profile.



Product code	Description	Size (litre)	Packaging unit
0008458	uPVC 5 cleaner	1	1

## blaugelb uPVC Cleaner S10

**Product information**  
Removes marks, small scratches & dirt particles from white uPVC profile.



Product code	Description	Size (litre)	Packaging unit
0008430	uPVC 10 cleaner	1	1

## blaugelb uPVC Cleaner S20

### Product information

Removes dust, protective film adhesive residue, pencil marks, and finger smudges from uPVC and Renolit products.



Product code	Description	Size (litre)	Packaging unit
0008438	uPVC 20 cleaner	1	1

## Siegenia Maintenance Oil

### Product information

Specialised maintenance oil/grease for lubricating hardware as per Siegenia maintenance and care instruction manual.



Product code	Description	Size (gr)	Packaging unit
ZXSX0120-093010	Maintenance oil	20	1

## Swipex Cleaning Hand Wipes

### Product information

Ideal to remove all fresh sealants, adhesives and foam from surfaces, hands and tools. It also removes grease and oil.



Product code	Description	Size	Packaging unit
113551	Cleaning cloths	100 cloths	1

## uPVC Frame Cleaner

### Product information

Fast acting and drying non-hazardous liquid for cleaning uPVC frames and surfaces. Ready to use, environmentally friendly, non abrasive and non smearing.



Product code	Description	Size (litre)	Packaging unit
5411183142831	uPVC frame cleaner	1	1

## blaugelb Hardware Fitting Spray

### Product information

A special maintenance and care agent for all movable fitting parts and the mechanics on windows, doors, gates and garages. The hardware spray effectively protects against dirt and corrosion, extends the service life of the hardware components and reduces the risk of consequential damage.



Product code	Description	Size (ml)	Packaging unit
0008446	Fitting spray	100	12
0008465	Fitting spray	500	12

## blaugelb Lock Cylinder Spray

### Product information

The locking cylinder spray is the universal care product for locks and locking cylinders with a special, non-greasy formula. It protects against water, icing, corrosion and wear. Also suitable for other moving mechanical parts.



Product code	Description	Size (ml)	Packaging unit
0370698	Cylinder spray	50	20

## blaugelb Self Drilling Screw

### Product information

Self drilling window construction screw with millribs for optimal use with window reinforcement.



Product code	Description	Driver	Thickness (mm)	Length (mm)	Material	Packaging unit
9051274	Self drilling screw	PH2	3.9	16	galvanised steel	1000
9051275	Self drilling screw	PH2	3.9	19	galvanised steel	1000
9051276	Self drilling screw	PH2	3.9	25	galvanised steel	1000
9051277	Self drilling screw	PH2	3.9	32	galvanised steel	500
9051278	Self drilling screw	PH2	3.9	40	galvanised steel	500

Note: PH2 driver bit available for purchase - product code 0009075806.

## blaugelb uPVC Hardware Screw

### Product information

Needle point hardware fixing screw for optimal use in uPVC window construction.



Product code	Description	Driver	Thickness (mm)	Length (mm)	Material	Packaging unit
9051255	Needle point screw	PH2	4	16	galvanised steel	1000
9051256	Needle point screw	PH2	4	20	galvanised steel	1000
9051257	Needle point screw	PH2	4	25	galvanised steel	1000
9051258	Needle point screw	PH2	4	30	galvanised steel	1000
9051259	Needle point screw	PH2	4	35	galvanised steel	500
9051260	Needle point screw	PH2	4	40	galvanised steel	500
9051261	Needle point screw	PH2	4	45	galvanised steel	500
9051262	Needle point screw	PH2	4	50	galvanised steel	500
9051263	Needle point screw	PH2	4	55	galvanised steel	500

Note: PH2 driver bit available for purchase - product code 0009075806.

## blaugelb SuperTape

### Product information

Due to its special properties, the blaugelb SuperTape is used, among other things, for gluing panel-covering panels on plastic / aluminum doors.

blaugelb SuperTape is a double-sided, high-performance adhesive tape based on acrylate. It was specially developed for bonding on low-energy surfaces (Low Surface Energy, LSE) such as powder-coated surfaces and various plastics, coated glass and many other surfaces that place high demands on the bonding. With the blaugelb SuperTape you can do without a primer in most cases, but for corresponding requirements we also offer coordinated blaugelb primers.

blaugelb SuperTape consists of 100% acrylic adhesive, which forms an almost indestructible connection between the substrates to be bonded. The blaugelb SuperTape can absorb and compensate for the different thermal expansion of the two materials with which it is connected. Since the tape remains visco-elastic, it is very well suited to absorb dynamic loads and to permanently absorb tensile, shear, splitting and peeling forces. Due to its strong initial tack, blaugelb SuperTape sticks immediately.

The closed cell structure gives the blaugelb SuperTape absolute wind and water tightness. When bonding two metals, the blaugelb SuperTape serves as a barrier and prevents metal corrosion between the surfaces.

### Product advantages

- strong adhesive strength with high initial adhesion, even without primer, immediate adhesion to most materials
  - suitable for low-energy surfaces, powder-coated substrates, various plastics, PVC, coated glass, aluminum, ceramics, silicones \*
  - high peel and shear strength
  - excellent conformability, can be used on structured surfaces
  - safe drying of the joint to the outside
  - driving rain and windproof
  - plasterable and paintable, concealed installation
  - UV-resistant up to 3 months
  - resistant to plasticizers, solvents, chemicals
  - UV, temperature, water and weather resistant
  - permanently aging resistant
  - vibration and sound-absorbing properties
  - tear-resistant and robust
  - excellent tightness, no separate sealing necessary
  - high impact resistance even at temperatures below 0 ° C
  - temperature- resistant from -40 ° C to + 90 ° C, briefly up to + 120 ° C
  - in the system Available with the coordinated blaugelb Cleaner IPA 10, blaugelb Primer 101 and blaugelb Primer 33
  - even stress distribution
- \* Carry out suitable preliminary tests for all materials, use primer if necessary. Plastics such as PP, PE, PTFE etc. vary widely. Do not use for decorative films based on PMMA.



Product code	Description	Width (mm)	Length (m)	Thickness (mm)	Packaging unit
0414730	Black supertape	12	33	0.64	5
0414731	Black supertape	12	33	1.1	5
0414732	Black supertape	12	16.5	1.5	5
0422086	Cleaning fluid - 1 litre	-	-	-	1
0414734	Primer - 1 litre	-	-	-	1

greenteQ Door Filler Piece

**Product information**  
Can be cut and screwed, for use in the reinforcement chamber, and is suitable for plastic fitting screws.

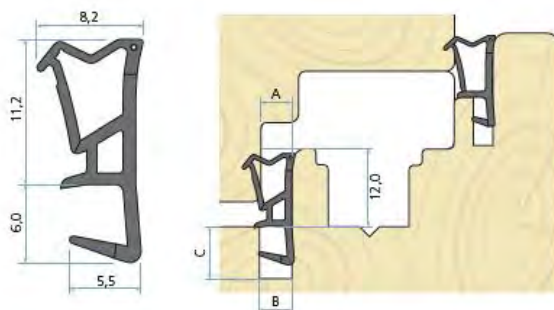


Product code	Description	Profile	Size (mm)	Length (m)	Material	Packaging unit
GTDFP2136	Door filler piece	Rehau	21 x 36	1	polyethylene	1
GTDFP2830	Door filler piece	Kommerling	28 x 30	1	polyethylene	1
GTDFP2836	Door filler piece	Aluplast 4000	28 x 36	1	polyethylene	1

## Schlegel 1432 Gasket

### Product information

Universal sealing solutions for timber windows, suitable as a centre seal. TPE foam seal with solid TPE base is weatherproof and UV-resistant.

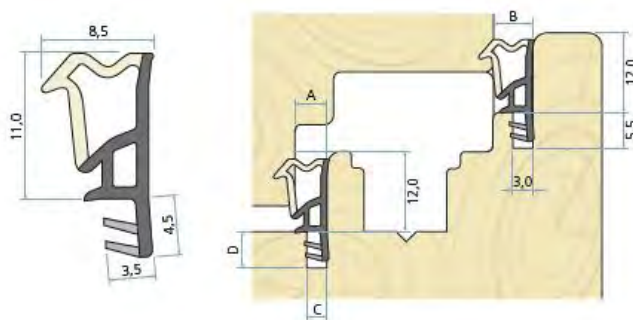


Product code	Description	Length (m)	Colours	Packaging unit
SCH1432DB	1432 gasket	150	dark brown	1
SCH1432WH	1432 gasket	150	white	1

## Schlegel 2002 Gasket

### Product information

Universal sealing solutions for timber windows, suitable as a centre seal as well as an overlap seal. TPE foam seal with solid TPE base is weatherproof and UV-resistant.



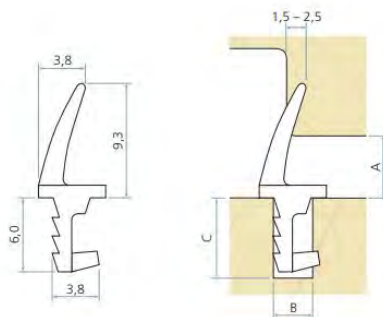
Product code	Description	Length (m)	Colours	Packaging unit
SCH2002DB	2002 gasket	150	dark brown	1
SCH2002WH	2002 gasket	150	white	1



## Schlegel 1440 Gasket

### Product information

Extruded weatherseals designed to meet specific needs for timber, uPVC and aluminium framed windows and doors. TPE extruded seal with solid TPE base is weatherproof and UV-resistant.

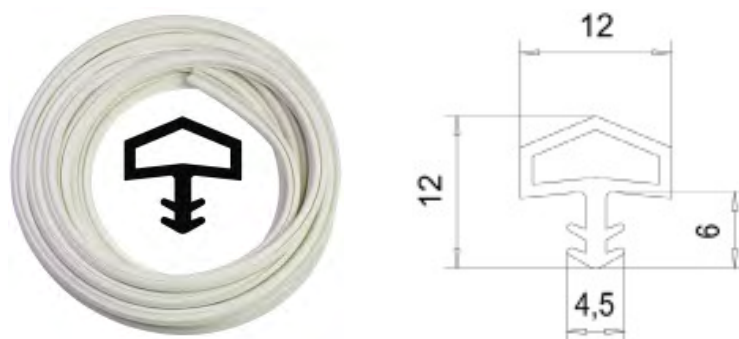


Product code	Description	Length (m)	Colours	Packaging unit
SCH1440DB	1440 gasket	300	dark brown	1
SCH1440WH	1440 gasket	300	white	1

## MTEC Timber Frame Gasket

### Product information

Extruded seal designed for internal timber frames.

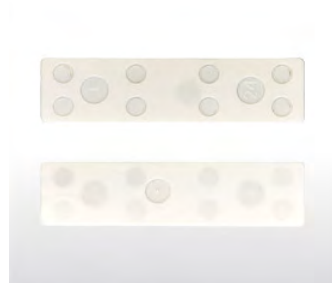


Product code	Description	Length (m)	Colours	Packaging unit
0009052834	Timber frame gasket	5	white	1
0009052835	Timber frame gasket	5	beige	1

## blaugelb Glazing Block - 1mm - White

### Product information

High load bearing capacity, optimal load distribution, aging and temperature resistant. Labyrinth ventilation system for optimum ventilation and drainage.



Product code	Description	Dimensions (mm)	Colour	Packaging unit
0416374	1mm thick polypropylene glazing block	20 x 1	white	1000
0416390	1mm thick polypropylene glazing block	24 x 1	white	1000
0416403	1mm thick polypropylene glazing block	28 x 1	white	1000
0416415	1mm thick polypropylene glazing block	32 x 1	white	1000
0416421	1mm thick polypropylene glazing block	34 x 1	white	1000

## blaugelb Glazing Block - 2mm - Blue

### Product information

High load bearing capacity, optimal load distribution, aging and temperature resistant. Labyrinth ventilation system for optimum ventilation and drainage.



Product code	Description	Dimensions (mm)	Material	Packaging unit
0416375	2mm thick polypropylene glazing block	20 x 2	blue	1000
0416391	2mm thick polypropylene glazing block	24 x 2	blue	1000
0416404	2mm thick polypropylene glazing block	28 x 2	blue	1000
0416416	2mm thick polypropylene glazing block	32 x 2	blue	1000
0416422	2mm thick polypropylene glazing block	34 x 2	blue	1000
0416447	2mm thick polypropylene glazing block	46 x 2	blue	1000

## blaugelb Glazing Block - 3mm - Red

### Product information

High load bearing capacity, optimal load distribution, aging and temperature resistant. Labyrinth ventilation system for optimum ventilation and drainage.



Product code	Description	Dimensions (mm)	Colour	Packaging unit
0416376	3mm thick polypropylene glazing block	20 x 3	red	1000
0416392	3mm thick polypropylene glazing block	24 x 3	red	1000
0416405	3mm thick polypropylene glazing block	28 x 3	red	1000
0416417	3mm thick polypropylene glazing block	32 x 3	red	1000
0416423	3mm thick polypropylene glazing block	34 x 3	red	1000
0416448	3mm thick polypropylene glazing block	46 x 3	red	500

## blaugelb Glazing Block - 4mm - Yellow

### Product information

High load bearing capacity, optimal load distribution, aging and temperature resistant. Labyrinth ventilation system for optimum ventilation and drainage.

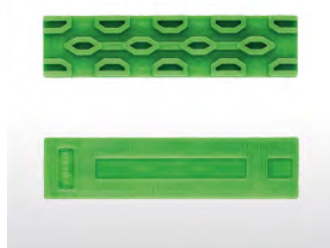


Product code	Description	Dimensions (mm)	Colour	Packaging unit
0416377	4mm thick polypropylene glazing block	20 x 4	yellow	1000
0416393	4mm thick polypropylene glazing block	24 x 4	yellow	1000
0416406	4mm thick polypropylene glazing block	28 x 4	yellow	1000
0416418	4mm thick polypropylene glazing block	32 x 4	yellow	1000
0416424	4mm thick polypropylene glazing block	34 x 4	yellow	500
0416449	4mm thick polypropylene glazing block	46 x 4	yellow	500

## blaugelb Glazing Block - 5mm - Green

### Product information

High load bearing capacity, optimal load distribution, aging and temperature resistant. Labyrinth ventilation system for optimum ventilation and drainage.



Product code	Description	Dimensions (mm)	Colour	Packaging unit
0416378	5mm thick polypropylene glazing block	20 x 5	green	1000
0416394	5mm thick polypropylene glazing block	24 x 5	green	1000
0416407	5mm thick polypropylene glazing block	28 x 5	green	500
0416419	5mm thick polypropylene glazing block	32 x 5	green	500
0416425	5mm thick polypropylene glazing block	34 x 5	green	500
0416450	5mm thick polypropylene glazing block	46 x 5	green	500

## blaugelb Glazing Block - 6mm - Black

### Product information

High load bearing capacity, optimal load distribution, aging and temperature resistant. Labyrinth ventilation system for optimum ventilation and drainage.



Product code	Description	Dimensions (mm)	Colour	Packaging unit
0416379	6mm thick polypropylene glazing block	20 x 6	black	1000
0416395	6mm thick polypropylene glazing block	24 x 6	black	1000
0416408	6mm thick polypropylene glazing block	28 x 6	black	500
0416420	6mm thick polypropylene glazing block	32 x 6	black	500
0416426	6mm thick polypropylene glazing block	34 x 6	black	500
0416451	6mm thick polypropylene glazing block	46 x 6	black	250

## blaugelb Installation Screws

### Product information

A universal fastener for the dowelless, efficient assembly of components made of timber, uPVC, aluminum and timber/aluminum in various substrates (concrete, sand-lime brick, solid brick, timber, lightweight concrete, aerated concrete, high-hole brick).

### Product advantages

- approved and market-proven attachment
- universal application in many common building materials
- suitable for clamping
- tapered thread tip reduces screwing torque
- distance fixing without side locking

### Pan Head Installation Screw



**Frame fixing pan head screw is particularly suitable for the following application:**

- direct fastening for the tension-free installation of windows and doors
- suitable for all frame materials
- can be used without lateral distance blocking

Product code	Description	Driver	Thickness (mm)	Size (mm)	Packaging unit
0422314	Window installation screws	TX30	7.5	62	100
0422319	Window installation screws	TX30	7.5	82	100
0422321	Window installation screws	TX30	7.5	102	100
0422325	Window installation screws	TX30	7.5	122	100
0422329	Window installation screws	TX30	7.5	152	100

Note: TX30 driver bit available for purchase - product code 0009075835.

### Bullet Head Installation Screw



**Frame fixing bullet head screw is particularly suitable for the following application:**

- direct fixing for the tension-free installation of windows and doors
- suitable for all frame materials
- can be used without lateral distance blocking
- preferably used in timber and timber/aluminum windows

Product code	Description	Driver	Thickness (mm)	Size (mm)	Packaging unit
0423709	Window installation screws	TX30	7.5	62	100
0423711	Window installation screws	TX30	7.5	82	100
0423713	Window installation screws	TX30	7.5	102	100
0422715	Window installation screws	TX30	7.5	122	100
0423717	Window installation screws	TX30	7.5	152	100

Note: TX30 driver bit available for purchase - product code 0009075835.

## Window Installation Screws - Countersunk Head

### Product information

Small fixing head for flush finish.



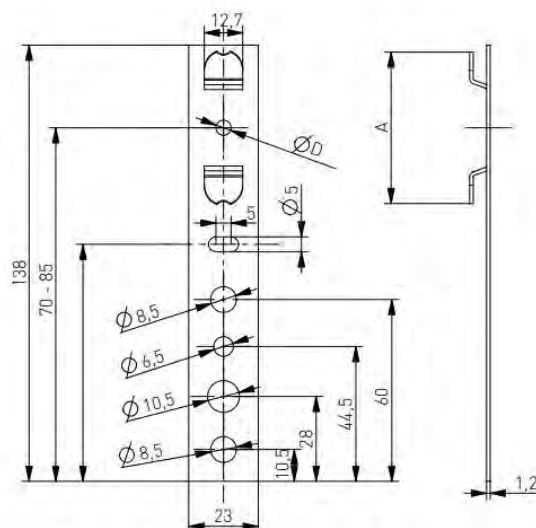
Product code	Description	Driver	Size (mm)	Packaging unit
6606027407	Window installation screws	TX30	7.5 x 82	100
6606027421	Window installation screws	TX30	7.5 x 102	100
6606027435	Window installation screws	TX30	7.5 x 122	100
6606027449	Window installation screws	TX30	7.5 x 152	100
6606027456	Window installation screws	TX30	7.2 x 182	100

*Note: TX30 driver bit available for purchase - product code 0009075835.*

## uPVC Window Installation Anchors - Turn In

### Product information

To aid in the installation of uPVC windows (1.2mm thick).



Product code	Description	Dimension A (mm)	Profile	Packaging unit
66025000100	Turn in installation bracket	25.0	Brugmann / Aluplast 7000 / Aluplast 8000	1000
66028000100	Turn in installation bracket	28.0	Salamander	1000
66032000100	Turn in installation bracket	32.0	Gealan 3000 / Bluevolution	1000
66037000100	Turn in installation bracket	37.0	Aluplast / LB / Wintech / Drutex / Decco 60 / Wital	1000
66041000100	Turn in installation bracket	41.0	Schuco / Rehau / KBE 88+ / Trocal	1000
66042500100	Turn in installation bracket	42.5	Veka	1000
66044500100	Turn in installation bracket	44.5	Gealan 8000/9000	1000
66044500100N	Turn in installation bracket	44.5	KBE 70 / Kommerling Euro / Inoutic Arcade / Inoutic E-Forte	1000
66046000100	Turn in installation bracket	46.0	Decco 70	1000
6604800100	Turn in installation bracket	48.0	Profine 76	1000
66049000100	Turn in installation bracket	49.0	Awangarde / Inoutic Prestige	1000
66050000100	Turn in installation bracket	50.0	Brugmann AD	1000

## uPVC Window Installation Anchors - Knock In

### Product information

Rotatable drop-in anchor fitting with 25mm width for different uPVC profiles, drilling through the window frame is not necessary. Fastening of the plate in the wall with different screws is possible.

### Product advantages

- the clamp can be easily driven into the window profile
- the fastening point in the wall can be freely positioned with the rotatable plate
- designed with one or two target bending points
- no hindrance in case of a thermally caused change in length of the window frame



Product code	Description	Thickness (mm)	Length (mm)	Packaging unit
451-035	Window anchor - Aluplast 2000-7000	1.25	150	250
455-016	Window anchor - Aluplast 2000-7000	1.25	200	150
466-005	Window anchor - Aluplast 2000-7000	2.00	260	150
451-033	Window anchor - Deceuninck Zendow	1.25	150	250
455-005	Window anchor - Deceuninck Zendow	1.25	200	200
466-033	Window anchor - Deceuninck Zendow	2.00	260	150
450-037	Window anchor - KBE 70mm	1.25	150	250
453-037	Window anchor - KBE 70mm	1.25	200	150

## Timber Window Installation Anchors

### Product information

Grip points for locating on window, ideal for situations without a reveal.



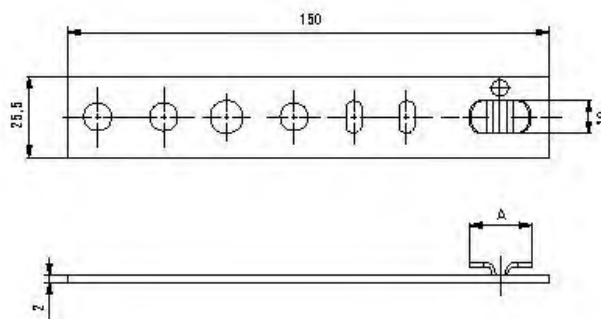
Product code	Description	Size (mm)	Packaging unit
102279675	Window installation bracket	140 x 19	1



## ALU Window Installation Anchors

### Product information

Turn and grip style for quick and easy installation.



Product code	Description	Dimension A (mm)	Profile	Packaging unit
66219000105	Steady montage anchor	16.5	Schuco	250
66219000103	Steady montage anchor	18.5	Aluplast / Aluprof / Ponzio / Yawal / Aluron	250

## blaugelb Protect Window Installation Brackets

### Product information

Easily adjustable fastening system for timber, uPVC and aluminum windows, which can be installed all around at any required fastening point.



Product code	Description	Dimensions (mm)	Material	Packaging unit
0428830	Installation brackets	150 x 50 x 2.5	galvanised steel	50
0428835	Installation brackets	220 x 50 x 2.5	galvanised steel	25
0428839	Installation brackets	280 x 50 x 2.5	galvanised steel	25
0428842	Assembly key 13mm	-	galvanised steel	1

## Soudal Gun Expanding Foam

### Product information

Polyurethane based insulation and filling foam which forms a permanent, air tight and waterproof bond to wood, metal, glass, masonry, polystyrene, concrete and most plastics (not on PE, PP). It is fitted with the revolutionary new Duravalve which ensures longer shelf life, non-clogging and higher yield per can.



Product code	Description	Size (ml)	Packaging unit
130278	PU gun foam trigger	750	12

## Soudal Foam Gun Cleaner

### Product information

Gun & foam cleaner is a ready to use cleaning aerosol can for use on Soudafoam Gun and Soudal foams.

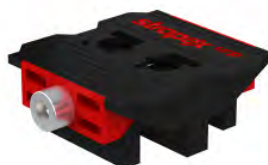


Product code	Description	Size (ml)	Packaging unit
106310	PU gun & foam cleaner	500	12

## Universal Positioning Spreader URP

### Product information

Precise, fast and failure-free window positioning during installation, enabling complete control of positioning and spreading force for uPVC, aluminium and timber windows.



Product code	Description	Material	Packaging unit
800EMOURP	Positioning wedge	plastic	100

## blaugelb Joint Sealing Tape 300

### Product information

Used for sealing strip joints and window installations, suitable for joint widths between 2-6mm, 5-12mm, and 9-20mm.

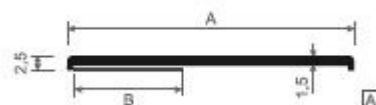


Product code	Description	Joint width (mm)	Width (mm)	Length (m)	Packaging unit
0418855	Installation compression tape	2-6	15	12	20
0418858	Installation compression tape	5-12	20	5.6	15
0418860	Installation compression tape	9-20	20	3.3	15

## Flat Installation Profile

### Product information

Flat internal trim with adhesive strip.

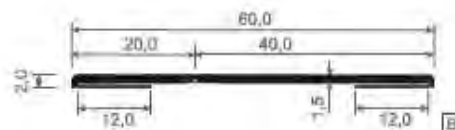
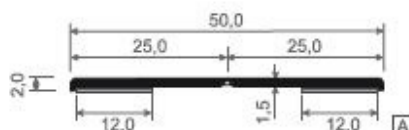


Product code	Description	Width - A (mm)	Width - B (mm)	Colour	Packaging unit
0782025R	Flat installation profile	20	12	white	150m roll
0783025R	Flat installation profile	30	15	white	150m roll
0784025R	Flat installation profile	40	19	white	150m roll
0785025R	Flat installation profile	50	19	white	150m roll

## Kink Angle Installation Profile

### Product information

Kink angle trim with adhesive strip.



Product code	Description	Size (mm)	Colour	Packaging unit
0782525R	Kink angle installation profile	25 x 25	white	150m roll
0782040R	Kink angle installation profile	20 x 40	white	150m roll

## Window Carry Strap

## Product information

Easily secured with the preinserted self drilling screw, enables secure and slip resistant lifting.



Product code	Description	Dimensions (mm)	Carry weight (kg)	Packaging unit
GTCS001	Carry strap with 4.2 x 25mm self drilling screw	450 x 22	up to 100	500

## blaugelb Foam Gun

**Product information**

Metal foam gun used for PU foam cans. The rubberized handle is ergonomically shaped and ensures a secure grip and fatigue-free working.



Product code	Description	Material	Packaging unit
0361772	PU foam gun with 2 tapered nozzles	metal	1

## blaugelb Flexible Foam Gun

**Product information**

More flexible than the standard foam gun, the flexible helper can access hard-to-reach areas.



Product code	Description	Material	Packaging unit
0400406	PU flexible foam gun with 2 tapered nozzles	metal	1

## Foam Gun - 800 AMP PM - Eco & Standard

### Product information

Adjustable gun for screw top PU foam cans.



Eco foam gun



Standard foam gun

Product code	Description	Material	Packaging unit
800AMPPMECO	PU foam gun - Eco	metal	1
800AMPPMSTANDARD	PU foam gun - Standard	metal	1

## Foam Gun - 800 AMP PM - Prestige & Ultra

### Product information

Adjustable gun for screw top PU foam cans.



Prestige foam gun



Ultra foam gun

Product code	Description	Material	Packaging unit
800AMPPMPRESTIGE	PU foam gun - Prestige	metal	1
800AMPPMULTRAM	PU foam gun - Ultra	metal	1

## Caulking Gun - 800 AMWM PR - Eco & Standard

### Product information

For standard 310ml cartridges.



Eco silicone gun



Standard silicone gun

Product code	Description	Material	Packaging unit
800AMWMPRECO	Silicone gun - Eco	metal	1
800AMWPLRSTAND	Silicone gun - Standard	metal	1

## Caulking Gun - 800 AMW P - Prestige

### Product information

For standard 310ml cartridges.



Product code	Description	Material	Packaging unit
800AMWMPPRESTIGE	Silicone gun - Prestige	metal	1



## Forum Glazing Hammer

### Product information

Plastic hammer with exchangeable yellow CA inserts, galvanised cast iron middle section, and polished timber handle. For gentle hitting without damaging the workpieces.



Product code	Description	Size (mm)	Packaging unit
6601011887	Glazing hammer	22	1
6601011890	Glazing hammer	27	1
6601011893	Glazing hammer	32	1

## greenteQ Glazing Shovel

### Product information

Used for securing of insulating glass panes in window casements, facilitates the installation of glazing blocks.



Product code	Description	Colour	Material	Packaging unit
GTGBGS01	Glazing shovel	green	plastic	1

## Foldable Ruler

### Product information

2m folding timber ruler



Product code	Description	Material	Length (m)	Packaging unit
6601018405	Foldable ruler	timber	2	1

## Stroxx Driver Bits

### Product information

Bits with color ring, 3 pieces.



Product code	Description	Drive	Length (mm)	Colour	Packaging unit
0009075805	Bits with colour ring, 3 pieces - 1/4	PH1	90	yellow	1
0009075806	Bits with colour ring, 3 pieces - 1/4	PH2	90	yellow	1
0009075807	Bits with colour ring, 3 pieces - 1/4	PH3	90	yellow	1
0009075811	Bits with colour ring, 3 pieces - 1/4	TX10	90	blue	1
0009075812	Bits with colour ring, 3 pieces - 1/4	TX15	90	blue	1
0009075813	Bits with colour ring, 3 pieces - 1/4	TX20	90	blue	1
0009075834	Bits with colour ring, 3 pieces - 1/4	TX25	90	blue	1
0009075835	Bits with colour ring, 3 pieces - 1/4	TX30	90	blue	1
0009075838	Bits with colour ring, 3 pieces - 1/4	HEX 4mm	70	orange	1
0009075840	Bits with colour ring, 3 pieces - 1/4	HEX 5mm	70	orange	1

## STROXX Window Installation Bag

### Product information

4 piece window installation bag containing inflatable air cushions with a capacity of 135kg. Easily align heavy objects with millimeter precision and bring them into the optimal position. Suitable for joints from 2-50mm, the pads are non-slip and the hand pump with valve enables easy operation.



Product code	Description	Weight (kg)	Packaging unit
0009035152	Fixing pads - 4 pieces	135	1

## blaugelb Saber Saw Blade

### Product information

Optimized blade shape with 130mm working blade, for maximum accessibility for timber and metal. Suitable for plunge cuts and can handle a wide variety of materials; including timber with nails / metal, chipboard, hard uPVC, GRP and epoxy.



Product code	Description	Length (mm)	Material	Packaging unit
0009022628	Saber saw blade - 5 pieces	150	bi-metal	1

## blaugelb Jigsaw Blade - Quick Cut

### Product information

Ideal for softer timbers in the construction area, and suitable for thick timber or fiberboard. Suitable for plunge cuts, long service life.



Product code	Description	Length (mm)	Material	Packaging unit
0009022632	Jigsaw blade - 5 pieces	100	steel	1
0009022631	Jigsaw blade - 5 pieces	152	steel	1

## blaugelb Jigsaw Blade - Clean Cut

### Product information

Ideal for softer timbers in the construction area. Suitable for plunge cuts, with 72mm working length and 2.7 mm tooth pitch, long service life.



Product code	Description	Length (mm)	Material	Packaging unit
0009022633	Jigsaw blade - 5 pieces	100	steel	1

## Stabila Electronic Angle Level

### Product information

Electronic protractor used for quickly determining and transmitting internal and external angles in a range from 0° to 270°.



Product code	Description	Length (cm)	Packaging unit
6601018698	Electronic angle level	45	1

## STROXX Spirit Level

### Product information

Shock proof (impact resistant) spirit levels in black design, and UV resistant.



Product code	Description	Length (cm)	Packaging unit
0009072662	Spirit level 100-443	40	1
0009072663	Spirit level 100-445	60	1
0009072664	Spirit level 100-446	80	1
0009072665	Spirit level 100-447	100	1
0009072666	Spirit level with magnet 100-453	40	1
0009072667	Spirit level with magnet 100-454	60	1
0009072806	Spirit level with magnet 100-455	120	1

## Otter Industrial Knife

### Product information

Industrial knife with leather case and sharpening steel.



Product code	Description	Material	Length - closed (mm)	Packaging unit
6601010195	Industrial knife	stainless steel & timber	100	1

## Forum Cable Knife

### Product information

Foldable 1-piece knife with timber handle, blade with notch.



Product code	Description	Length (mm)	Packaging unit
6601008575	Cable knife	195	1

## STROXX Multi-tool - 14 in 1

### Product information

Multi-function tool and case, with needle nose pliers, flat nose pliers, side-cutters, serrated cutting edge, flat-blade screwdriver, Phillips screwdriver, knife blade, nailer, file with flat-blade screwdriver, mandrel, medium flat-blade screwdriver, bottle opener and screwdriver.



Product code	Description	Packaging unit
6601010174	Multifunction tool	1

## STROXX Utility Knife

### Product information

Aluminium cutter knife with 18mm snap-off blade.



Product code	Description	Blade width (mm)	Packaging unit
0009052741	Cutter knife	18	1
0000427753	Cutter knife blades	18	50

## STROXX Telescopic Assembly Support

### Product information

Ceiling and assembly support for dry lining and timber beams, provides easy assistance for ceilings and sloping walls. Extendable from 1.6-2.9m, with a 90kg maximum weight at 90 deg, and a 40kg maximum weight at 65 deg.



Product code	Description	Size (m)	Packaging unit
0009072641	Telescopic support rod	1.6 - 2.9	1

## STROXX Folding Trestle

### Product information

Foldable 78.1 x 99.1 cm trestle table with steel frame and anti slip pad. Easily collapsible for storage, and two hooks on the side enable the solid assembly of two work trestles.



Product code	Description	Weight (kg)	Packaging unit
0009071990	Foldable trestle	136	1



## Fugen Meister Radius Joint Spatula Set

### Product information

Spreader for defined bevels and efficient smoothing on movement joints, connections joints and corner joints. Consists of radius of 4mm & 6mm, 8mm & 10mm, and 12mm & 14mm.



Product code	Description	Packaging unit
6601024133	Spatula joint pack - 3 piece	1

## Fugen Meister Angle Joint Spatula Set

### Product information

Spreader for defined bevels and efficient smoothing on movement joints, connections joints and corner joints. Consists of angles measuring 5mm & 6mm, 8mm & 10mm, and & 90°, and a radius of 3mm.



Product code	Description	Packaging unit
6601024136	Spatula joint pack - 3 piece	1

## greenteQ Scraper

### Product information

Angled tips and bevels for various silicone joints.



Product code	Description	Colour	Material	Packaging unit
GTSCR01	Silicon scraper	white	plastic	1

## Ramsauer Rapid Cutter

### Product information

Light weight cutter designed for opening sealant cartridges and cutting nozzles.



Product code	Description	Packaging unit
9400200	Rapid cutter	1

## Dust Pan & Brush

**Product information**

Metal dustpan with long timber handle. Industrial hand brush with coconut and raw timber.



Product code	Description	Packaging unit
6601018028	Dustpan	1
6601018016	Dustpan brush 45cm	1

**Siegware**

53 Haddon Drive  
PO Box 27  
Ballan Vic 3342  
Australia

Ph: +61 3 5368 1181  
[info@siegware.com.au](mailto:info@siegware.com.au)  
[www.siegware.com.au](http://www.siegware.com.au)  
[www.siegware.co.nz](http://www.siegware.co.nz)

2020 edition

